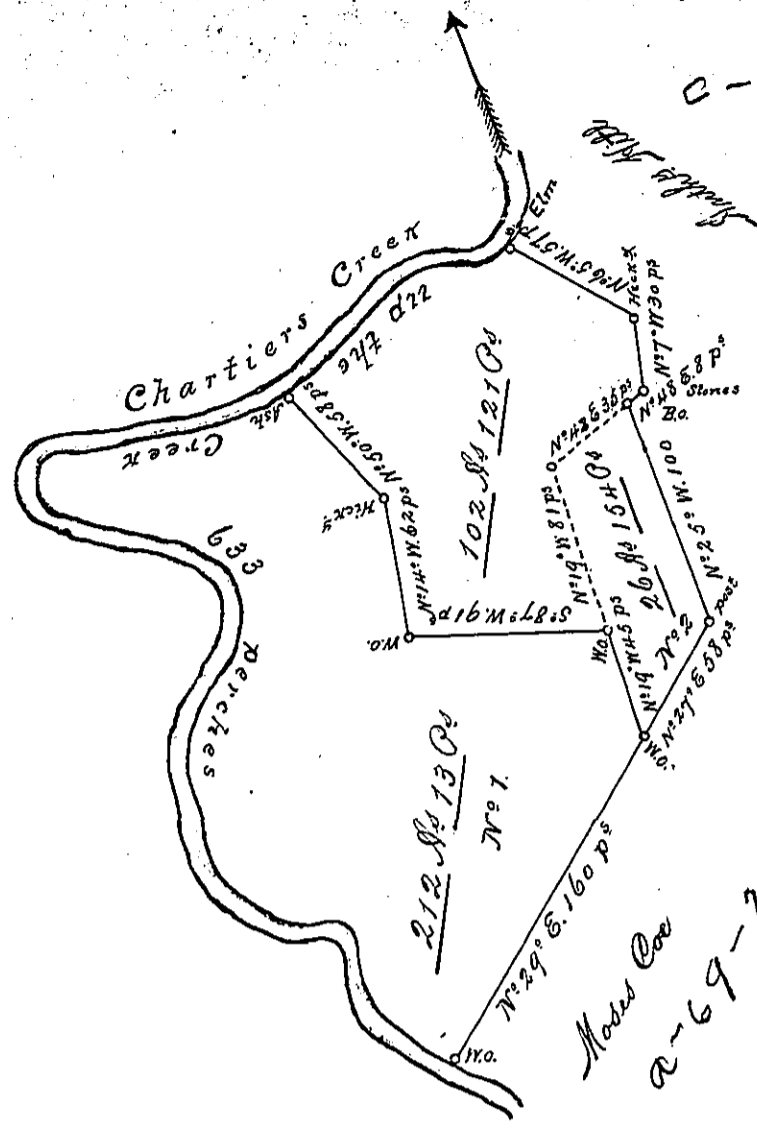


C-79-121



Courses &c up the C^k
 S° 82° W 48 Pds
 S° 41° W 79 Pds to y^e Ash
 corner to Tho^s Noyers Survey
 S° 75° W 124 Pds
 S° 50° E 23 Pds
 S° 72° E 78 Pds
 S° 15° E 28 Pds
 S° 23° W 45 Pds
 S° 5° E 46 Pds
 S° 34° E 30 Pds
 S° 79° E 54 Pds
 S° 20° E 30 Pds
 S° 57° E 48 Pds to a W. C.
 on y^e C^k 633
 Corner to Moses Cove

Francis Morrison

A-82-245

Moses Cove
A-69-278

Tho ^s Noyers Claim	212 Ac ¹³ P ¹³ strict Measure
Francis Morrison's	26 .. 154 P ¹⁵
The Balance	102 .. 121 P ¹⁵
Total	341 Ac ¹²⁸ P ¹⁵
	320 ³ / ₄

A Draught of a Survey called "The Shop" situate on Charliers C^k in Washington County containing 341 Ac¹²⁸ P¹⁵ strict Measure executed the 19th of Decem^r 1787 in Consequence of a Certif^{ic} for 400 Ac¹ granted to Jn^o Blackburn by the Commis^{rs} appointed by Virg^a to adjust the Claims to unpatented lands in the Counties Monong^a Yong^a & Ohio and duly entered with the County Sur^{or}

Note: The Segment No. 1. contain^g 200 Ac¹³ P¹³ and y^e Allow^{nc} (212 Ac¹³ P¹³ strict Measure) was surveyed March y^e 9th 1786 in Obed^{nc} of an Order for 300 Ac¹ granted Tho^s Noyers Ap^l 6th 1769 No. 2859 — The Segment No. 2 contain^g 26 Ac¹⁵⁴ P¹⁵ is included in a Survey made on a Virg^a Entry in the name of Francis Morrison — The Balance contain^g 102 Ac¹²¹ P¹⁵ strict Measure

John Luxens Esq^r & Sen^r }
 Presley Nevill } D. S.
 Matthew Ritchie }

IN TESTIMONY that the above is a copy of the original remaining on file in the Department of Internal Affairs of Pennsylvania, made conformably to an Act of Assembly approved the 16th day of February, 1833. I have hereunto set my Hand and caused the Seal of said Department to be affixed at Harrisburg, this

Second day of June 1896

James W. Fatta
 Secretary of Internal Affairs.